

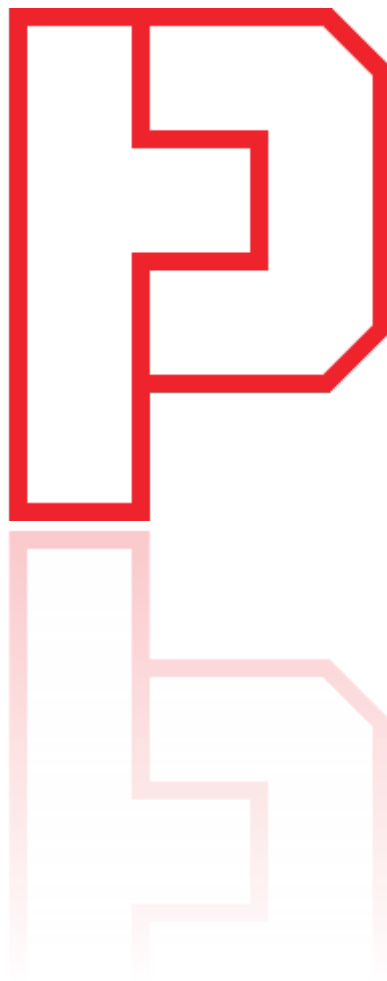
Hypertherm[®]

ProNest[®] 2019 LTS

Nesting Software

What's New

Released April 2018



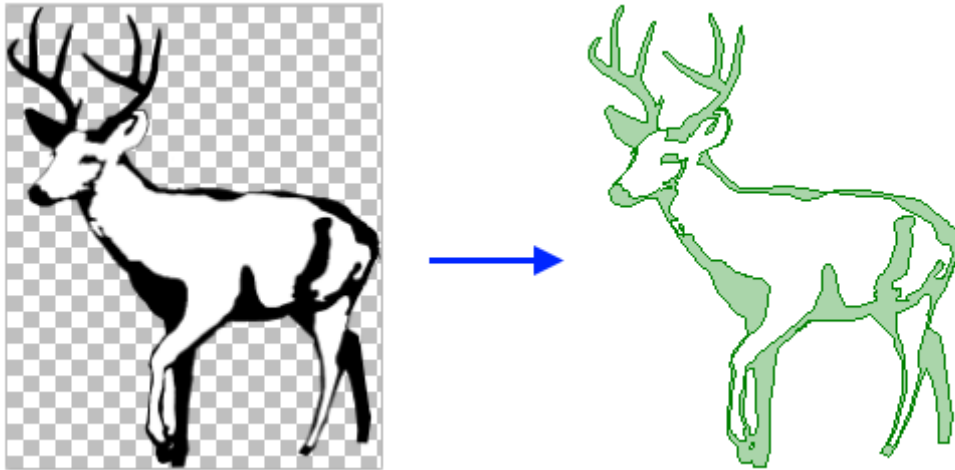
New Features and Enhancements

The following enhancements are available in the ProNest LTS 13.0 release:

CAD Import

Importing raster images

ProNest can import raster image files and convert them to vector parts that can be cut on your machine.



The following image file formats can be imported:

- PNG
- JPG, JPEG
- BMP
- GIF

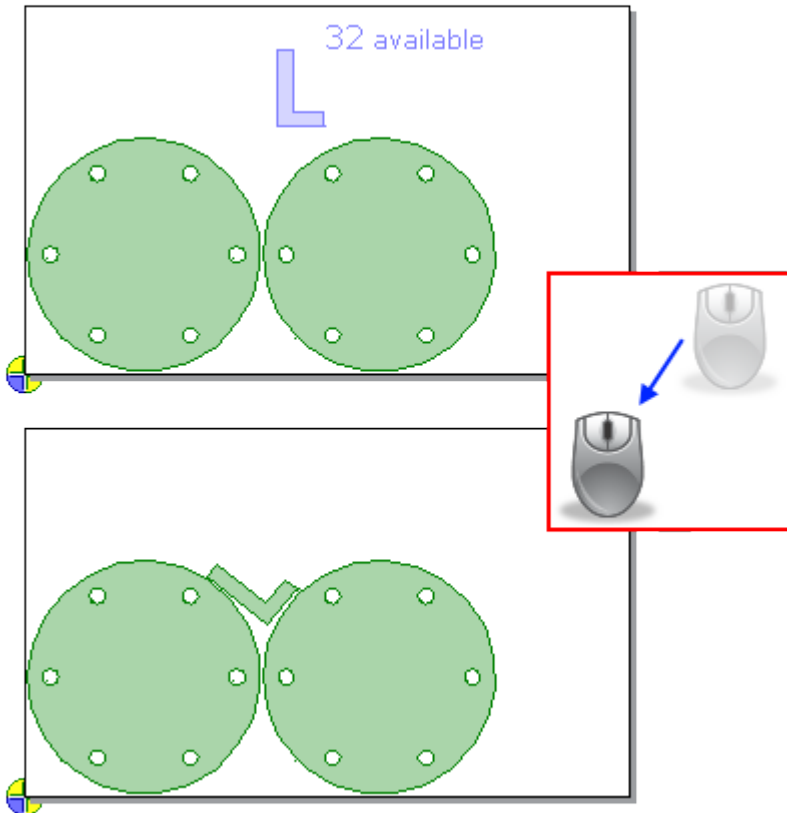
New settings enable you to fine-tune the image prior to import, to get the best result. Once the image has been converted to a part, it can be nested and output.

For images that will be cut more than once, you can easily save a vector DXF version of the part using the Export DXF feature.

Nesting and Utilization

Manual Nesting: Smart Drag

Manual nesting is now much more fluid and intuitive. With existing parts on the nest, fitting in parts along the contours of other nested parts and the plate edges is much easier.



When dragging a part on the nest, the part will bump up against existing parts or plate edges and then rotate to fit. You can glide the part along edges of neighboring parts to get the best result. This makes it easy to fit parts into empty spaces on the nest, without the need to manually rotate the part to just to right angle.

Benefits include:

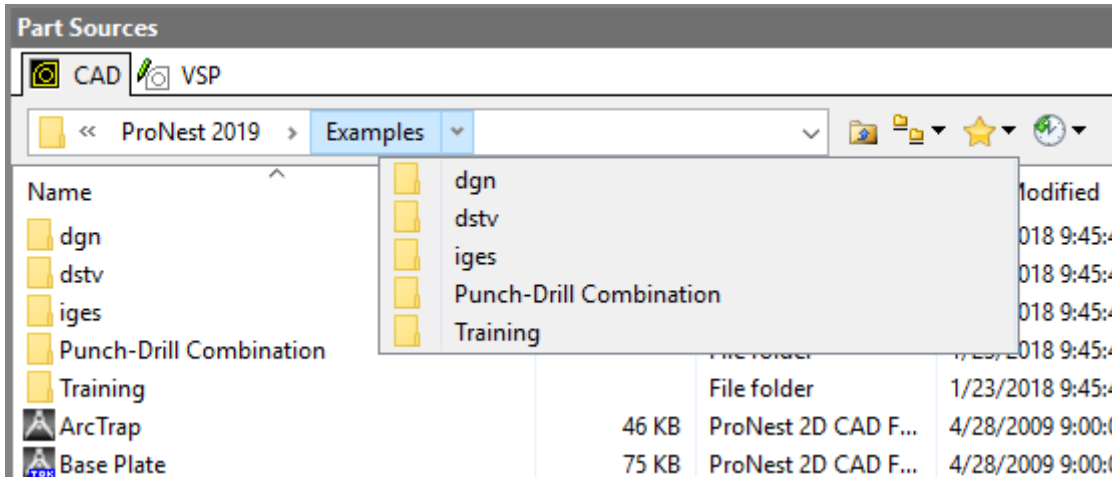
- Faster and easier to create tighter nests during manual nesting
- Achieve better plate utilization, especially when nesting around the contours of larger parts

This feature can be quickly turned on or off in the main window.

Ease of Use

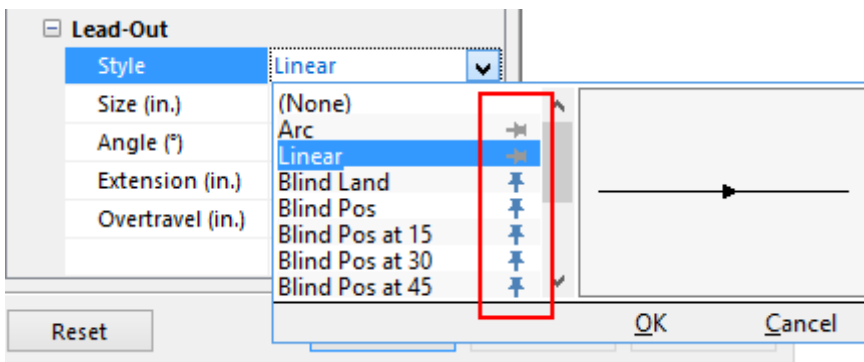
Breadcrumbs style folder navigation

Several areas in ProNest now use a more modern breadcrumb style folder explorer, making it faster and easier to browse for folders and files.



Pin lead styles

When selecting leads, commonly used lead styles can now be pinned to the top of the list, for quick access.



Design2Fab

Design2Fab Integration

Roundtrip Design2Fab integration has been added to ProNest, enabling you to leave a ProNest job, add fittings in Design2Fab and return to the ProNest job with the patterns added to the part list, ready for nesting and NC output. (Introduced in ProNest 2017 version 12.1.3.)